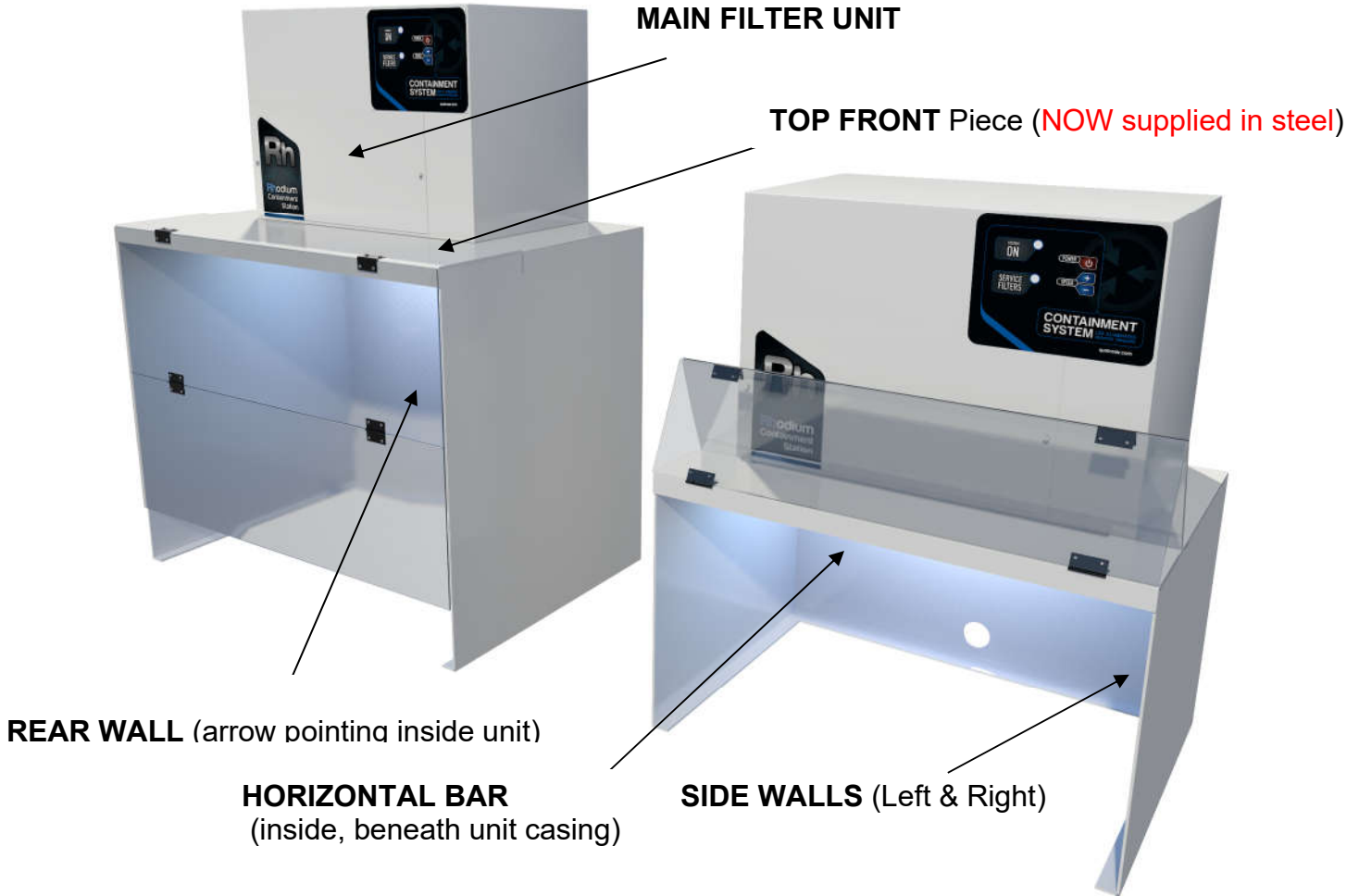


Operations & Maintenance Manual

DCS & Rh Series



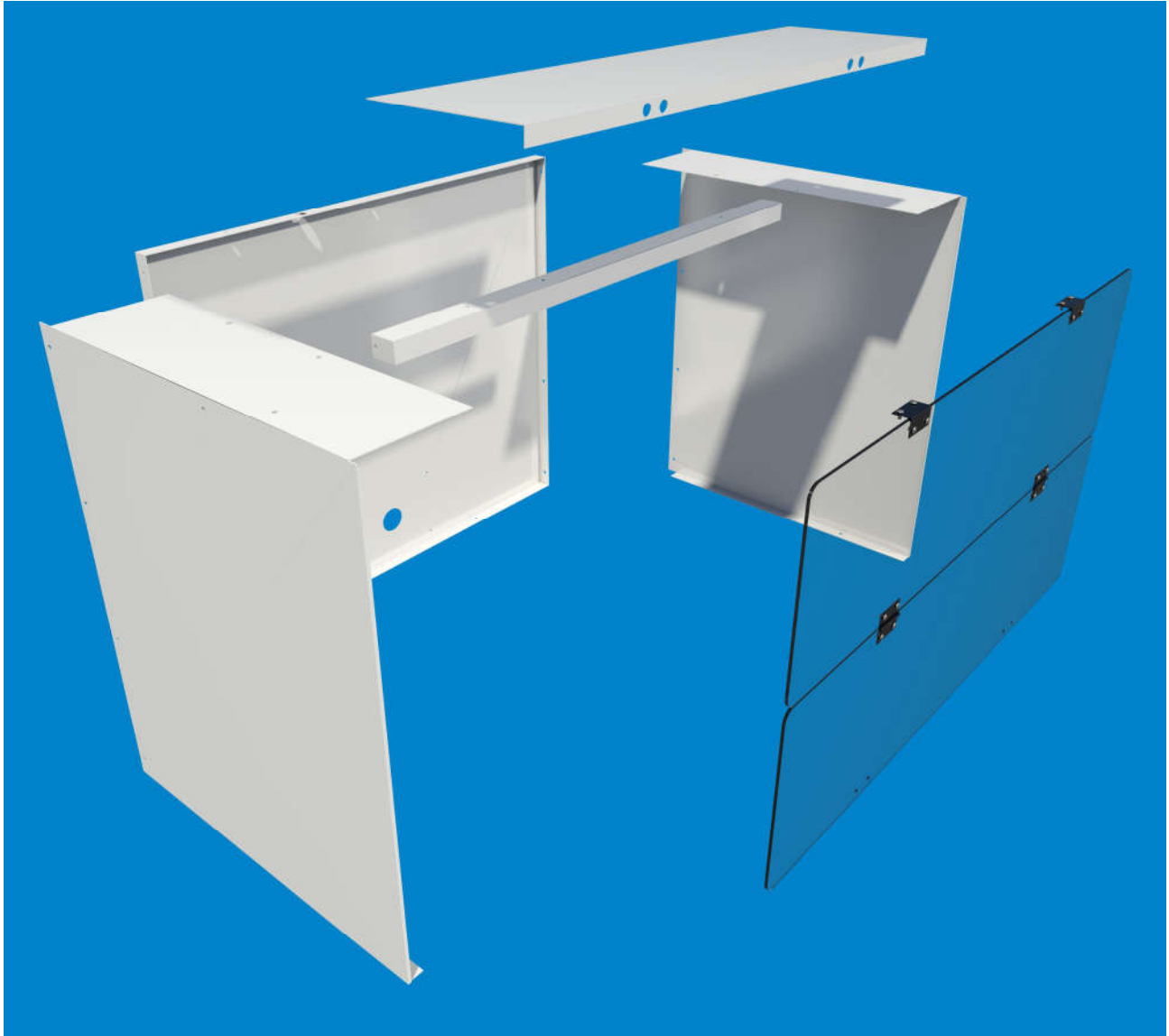
Models Available from Quatro:

Models:	Containment Stand	Overall dimensions
DCS-GE- 1 or Rh-DTA-1	14.5"h x 24"w x 17"d	29"h x 24"w x 18"d, 55 lbs
DCS-GE- 2 or Rh-DTA-2	24"h x 29"w x 20"d	38.5"h x 29"w x 20"d, 60 lbs

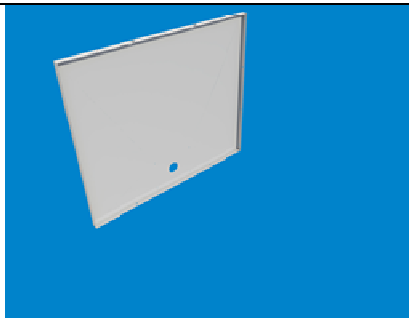




Included in the Kit are:

PN:	Install Description
MAIN UNIT (box 1 of 2)	Filters already inside (remove filter packaging before operating unit), Remove 4 nuts at base of unit, REPLACE THESE NUTS FROM THE UNDERSIDE WHEN INSTALLING UNIT ONTO CONTAINMENT HOUSING TO SECURE PROPERLY
Containment Housing (Box 2 of 2)	(2)SIDE WALLS (L&R), (1)REAR WALL, (1)HORIZONTAL BAR, (1)TOP FRONT (1) Pre-Assembled 2-door Assembly HARWARE:(12) screws to assemble LARGE stand, (10) screws required for SMALL stand (door hardware pre-installed on doors) Box also contains this O&M manual & Power cord.

DCS Containment Box Assembly



Assembly Continued

	<p>Ensure REAR WALL has flanges towards you (front) and 1.5" diameter hole on bottom</p>
	<p>Place (1) RIGHT SIDE WALL at 90 degrees from (1) REAR WALL: Ensure RIGHT SIDE WALL has flanges are towards the LEFT Fasten together using 3 screws, DO NOT TIGHTEN (4 screws for LARGER stand)</p>
	<p>Place LEFT SIDE WALL at 90 degrees from REAR WALL, ensure LEFT SIDE WALL flanges are towards RIGHT, Fasten together using 3 screws, DO NOT TIGHTEN (4 screws for LARGER stand)</p>
	<p>Insert HORIZONTAL BAR near top front in "L" shape as shown in photo (to SQUARE the box) Install with 2 screws from the sides, TIGHTEN ALL SCREWS</p>
	<p>Install TOP FRONT piece using 2 screws & place as shown above</p>

Final Assembly

	<p>Take MAIN UNIT out of the box (box 1of2) place on its side remove 4 nuts at base of unit. (SAVE NUTS FOR LATER).</p> <p>Open filter door in front, remove filter packaging before operating unit</p> <p>Place MAIN UNIT onto Containment box, insert the 4 screws into holes in containment box.</p> <p>WHEN INSTALLING UNIT ONTO CONTAINMENT HOUSING, SECURE PROPERLY BY REPLACING THE NUTS (FROM ABOVE) INTO THE UNDERSIDE OF THE UNIT FROM BENEATH CONTAINMENT BOX</p> <p>Install Led Assy onto grille (as per photo shown), plug LEDs into socket and peel & stick LED header and ON-OFF switch onto surface</p>
	<p>Place Unit over Containment System with BLACK Control Panel facing front. Ensuring that holes on Stand & holes on unit align. Fasten together using (4) nuts that were previously removed (fasten from containment section below)</p> <p>Install Pre-assembled HINGED DOORS to TOP FRONT piece Un-screw 4 nuts on Pre-assembled doors Screw into TOP FRONT Horizontal Piece</p> <p>HINTS:</p> <p>Hinge knuckles MUST always face front,</p> <p>MIDDLE Hinges should always be on top of Plexi-Door</p> <p>TOP Hinges are installed BENEATH Plexi-Door</p> <p>THIS WILL ENSURE DOORS FLIP UP CORRECTLY AND REST ON TOP SURFACE WHEN OPEN</p>

LED Installation in DCS Unit



See plug protruding from the RH unit above



Attach female plug from the LED to the male plug



Partially remove backing from the LED and affix it to the center of the grill



Remove backing from both the LED Header and Switch, and affix them to the side, where you will easily be able to reach them

INTRODUCTION

You are now the owner of an advanced effective indoor air purifier. You may now expect a noticeable improvement in your air quality as the **DCS Purifier** begins the process of reducing microscopic airborne particulate as well as harmful gases, smoke, dust and pollen.

SAFETY PRECAUTION

Read all of the instructions contained within this manual before operating this unit. Keep this manual, as it contains information for proper operation and maintenance. Keep all fastening hardware tight to ensure that the unit is in proper working condition. Familiarise yourself with the way in which filters are removed, installed, and serviced. All filters must be in place whenever this machine is in operation. Use only on a grounded electrical circuit; do not use any two-wire electrical prong adapters to defeat the three-pronged plug on the end of the cord. When servicing the motor, be careful when touching the exterior of the motor as soon as it has been turned off; it may be hot enough to be painful or cause injury. they are built to operate at higher temperatures. **Do not substitute any other filters (particulate or chemical) for those supplied, as this will alter the unit efficiency. DO NOT SERVICE MOTOR OR CONTROL PANEL UNLESS UNIT IS UNPLUGGED FROM RECEPTACLE (ITS POWER SUPPLY)!**

PRINCIPLE OF OPERATION

The air is drawn in through an intake grille located at the bottom of unit. The air then passes through the particulate and odor filters. The clean air is then released through the top discharge grille into the controlled space. You can discharge the air either from the top or from the rear, just replace the plate from the rear to the top.

MAIN SYSTEM COMPONENTS

BLOWER ASSEMBLY: The blower is factory balanced and tested to ensure quiet, vibration-free operation.

CONTROL PANEL: Designed for easy monitoring, features microprocessor based control for speed variation and filter alarms.

UNIT RECEIVING INSPECTION

Upon receipt, inspect unit for either visible or concealed damage. Damage should be immediately reported to the transport company. Ensure:

- All internal components are present and are adequately supported and installed;
- Labels and serial numbers are present for future identification;
- Verify that power supply is compatible with equipment. Also check that the unit is plugged into a grounded receptacle;
- Ensure that unit-mounted casters are tight and secure before manoeuvring the system.

START-UP

- Place unit on a flat surface, ensure filters are installed (see **Equipment Installation and Filter Maintenance Guide** on face of unit);
- Ensure that supply and return air grilles are not obstructed in any way (air circulation patterns will be inhibited if airflow is obstructed);
- Insert male end of cord into 15-amp circuit. Unit should be connected to an independent circuit;
- Press POWER on panel to start unit and verify that system operating lights are working;
- All lights should illuminate and flash with panel goes through self diagnostic mode;

WARNING: DO NOT OPERATE UNIT UNLESS ALL FILTERS ARE IN PLACE.

FILTER & BLOWER MAINTENANCE

Proper maintenance is critical to extend the life of the system. The information presented below outlines basic maintenance procedures ensuring the unit will provide trouble-free operation. The purifier is designed to allow quick access to the filters, blower/motor and control panel assembly.

Filter Types, Sequences may vary depending on your model:

Level	Type	Replacement Frequency	Filters	Filter Location
Level I	Dust Filter	Every 3 months	F071-BX-6/box	Bottom
Level II	Odor Filter	Every 12-24 months (depending on use)	(1) NC-??? (provides approx 2.5 refills)	Middle
Level III	Hepa Filter	Every 12 months	F074-1/box	Top

FILTER-ALERT SYSTEM AND FILTER REPLACEMENT

When filters need to be replaced, the filter LED illuminates and beeper sounds for 2 seconds every 4 hours.

Proper maintenance is critical to extend the life of the filtration system. QUATRO has therefore included in this unit a "FILTER ALERT" Warning System. When the Filter Replacement Indicator Illuminates, it is time to replace the filter. The information presented below outlines basic maintenance procedures ensuring the unit will provide trouble-free operation for years to come.

FILTER REPLACEMENT

- Open filter door
- Carefully slide out filters, slide clean filters gently into place
- Ensure Filters are replaced as per airflow indications
- If encountering difficulties, confirm that there are no obstructions in the filter track
- HEPA filters should be installed with gaskets facing down on the filter tracking
- Utmost care must be taken not to damage the exposed portions of HEPA filter. DO NOT bend pleats
- RESET Filter Light (see Resetting Filter Lights Section below)**

ODOR FILTER TRAY (F077-4"deep, or F072-2"deep) MAINTENANCE

It is essential that the odor filter be replaced approximately once every twelve months **OR** immediately following any detection of odor. DCster an operating period of twelve months (or when the filters are consumed), call your authorised distributor to purchase a replacement filter prior to removal of existing one. To replace Odor Filter:

- Ensure that the unit is unplugged, open filter door
- Slide out the existing filter tray, remove new odor refill from the box that it was shipped in
- Reinsert new filter back into the system (ensure airflow arrows are pointing up)
- Return door to the closed position and verify that an airtight seal is maintained
- RESET Filter Light (see Resetting Filter Lights Section below)**

To refill existing filter tray with new odor filter:

- Open door and slide out existing filter
- Unscrew the two (2) top panel cover and lift off cover
- Pour out used odor filter (**this procedure may be dusty, therefore a dust mask is recommended**)
- Refill F077 container with fresh odor filters and replace the panel cover and re-insert into unit
- RESET Filter Light (see Resetting Filter Lights Section below)**

Filter disposal is the responsibility of the end-user. Please contact local authorities for proper and legal disposal.

BLOWER MAINTENANCE

WARNING: Switch unit off and unplug power cord from wall before servicing the blower.

The motor is equipped with electric motor grade double shielded ball bearings and a special lubricant, assuring long life and quiet operation. No extra motor maintenance is required.

ANNUAL GENERAL INSPECTION

The sealing integrity of the **DCS Purifier** is essential. Every 12 months, verify that all gaskets are in proper condition. Should the door gaskets adhere to the unit when opening a door, lubricate its surface with a transparent grease or petroleum jelly. Should the unit be relocated continuously for optimum efficiency, ensure all casters are tightly fastened.

The motor is equipped with electric motor grade double shielded ball bearings and a special lubricant, assuring long life and quiet operation. No extra motor maintenance is required.

RESETTING FILTER LIGHTS

When filters need to be replaced, the filter LED illuminates and beeper sounds for 2 seconds every 4 hours.

RESET FILTER LEDS, WHILE THE UNIT IS OPERATING, reset filter lights as follows:

<p>AFTER REPLACING THE FILTER, APPROPRIAE FILTER MUST BE RESET (whether light is illuminated or not):</p> <ul style="list-style-type: none"> • Plug power back to the unit • Press POWER (so unit motor is operating) • HOLD UP AND DOWN ARROWS (at the same time) until unit BEEPS (5 seconds) • Once panel BEEPS, Filter Lights will be FLASHING SLOWLY • using UP/DN arrows, Press UP until appropriate filter light is FLASHING QUICKLY • press POWER button, light will go OFF • if you need to reset another light, Press SPD UP or DN to the appropriate light • again, press POWER button, appropriate light will go OFF • do not press anything for 20 seconds • filter is now reset and unit is operational again • If OFF Press POWER ON to start motor again <p>NOTE: if at any time you are in RESET MODE and wish to leave without pressing any buttons or resetting any Alarm Lights, simply do not touch the panel for 20 seconds and unit will go back to Operational Mode (Microprocessor will keep in memory any RESET that you have pressed)</p>

SPEED CONTROL

The unit is equipment with built-in speed control. By pressing & holding down the speed UP/DOWN triangles, you respectively increase and decrease unit's speed.

REDUCTION IN AIRFLOW

As the unit cleans the air, the filters are removing the particles of dust and dirt in the air stream. As the filters accumulate dirt (both visible and microscopic), a restriction on the blower/motor is created. As the restriction becomes greater, the air capacity delivered by the blower decreases rendering the unit less effective. **IT IS VERY IMPORTANT TO CHANGE FILTERS ON A REGULAR BASIS.**

TROUBLESHOOTING GUIDE

Symptoms	Possible Cause	Suggested Solution
Unit will not start	<ul style="list-style-type: none"> o Faulty Power supply o Return or supply grille blocked o HEPA filter improperly installed o Blown fuse o Unit not plugged into receptacle 	<ul style="list-style-type: none"> o Check breaker box o Remove obstruction o See Section 7.2 o Replace fuse o Plug unit in
Excessive noise	<ul style="list-style-type: none"> o Blower wheel contacting cone o Fan isolators loose or off 	<ul style="list-style-type: none"> o Realign/replace wheel o Replace isolator
Insufficient airflow	<ul style="list-style-type: none"> o Obstruction in system o Clogged filters 	<ul style="list-style-type: none"> o Remove obstruction o Replace filters
Excessive airflow	<ul style="list-style-type: none"> o Filters not in place 	<ul style="list-style-type: none"> o Install filters

WARRANTY

QUATRO Air Technologies warrants its equipment to be free from defect in material and workmanship under normal use and service for a period of one year from date of shipment. QUATRO's obligation under this warranty shall be limited to replacing any parts, thereof, which shall be demonstrated to have been defective. This is expressly in lieu of all other warranties, express or implied, including the warranties of merchantability and fitness.

QUATRO claims no warranty as to merchantability or as to the fitness of the merchandise for any particular use and shall not be liable for any loss or damage. No person, firm or corporation is authorized to assume for QUATRO any other liability in connection with the sale of these goods. Equipment, parts and material manufactured by others and incorporated in QUATRO's equipment are warranted by QUATRO only to the extent of the original manufacturer's liability to QUATRO Air Technologies Inc.

Conditions and Limitations:

This warranty does not cover abuse, misuse, maintenance negligence, improper assembly, acts of vandalism, acts of God, fear wear, modifications of the equipment or installation of a part not recommended by QUATRO Air Technologies, as well as operation of the equipment at voltages other than those specified by QUATRO Air Technologies Inc.

REPLACEMENT PARTS & FILTERS For DCS models

Qty	Description	Part No.
1	Dust Filter	F071-BX
1	Repl. General Odor Filter REFILL (includes 2.5 refills)	NC-GPC
1	Repl. 2" General Odor Filter WITH CONTAINER	F072-GPC
1	Blower Motor	A001
1	North American Cordset	E220
1	Replacement LED Light (no adapter)	AA193
1	Replacement Viewing Door (1/bx) Small Cabinet	AR313-17
1	Replacement Viewing Door (1/bx) Large Cabinet	AR313-18
1	Repl. Viewing Door Kit (2 doors, 4 hinges, Screws) Small Cabinet	AR313-37
1	Repl. Viewing Door Kit (2 doors, 4 hinges, Screws) Large Cabinet	AR313-38
1	Replacement Circuit Breaker	AR104
1	Plastic Thumbscrews (WHITE, for Filter Access Door, 2/box)	AR129

* consult your dealer in regards to your specific odor filter application

REPLACEMENT PARTS & FILTERS For Rh models

Qty	Description	Part No.
1	Dust Filter	F071-BX
1	HEPA Filter	F074
1	Repl. Odor Filter (includes 4 refills)	NC-BPC
1	Blower Motor	A001
1	North American Cordset	E220
1	Replacement LED Light (no adapter)	AA193
1	Replacement Viewing Door (1/bx) Small Cabinet	AR313-17
1	Replacement Viewing Door (1/bx) Large Cabinet	AR313-18
1	Repl. Viewing Door Kit (2 doors, 4 hinges, Screws) Small Cabinet	AR313-37
1	Repl. Viewing Door Kit (2 doors, 4 hinges, Screws) Large Cabinet	AR313-38
1	Replacement Circuit Breaker	AR104
1	Plastic Thumbscrews (WHITE, for Filter Access Door, 2/box)	AR129

* consult your dealer in regards to your specific odor filter application